

**SALL4 Antibody (Center)**  
**Purified Rabbit Polyclonal Antibody (Pab)**  
**Catalog # AP21144a****Specification**

---

**SALL4 Antibody (Center) - Product Information**

Application	WB,E
Primary Accession	<a href="#">O9UJO4</a>
Reactivity	Human
Host	Rabbit
Clonality	polyclonal
Isotype	Rabbit IgG
Calculated MW	112231

**SALL4 Antibody (Center) - Additional Information****Gene ID** 57167**Other Names**

Sal-like protein 4, Zinc finger protein 797, Zinc finger protein SALL4, SALL4, ZNF797

**Target/Specificity**

This SALL4 antibody is generated from a rabbit immunized with a KLH conjugated synthetic peptide between 493-526 amino acids from the Central region of human SALL4.

**Dilution**

WB~~1:1000

E~~Use at an assay dependent concentration.

**Format**

Purified polyclonal antibody supplied in PBS with 0.09% (W/V) sodium azide. This antibody is purified through a protein A column, followed by peptide affinity purification.

**Storage**

Maintain refrigerated at 2-8°C for up to 2 weeks. For long term storage store at -20°C in small aliquots to prevent freeze-thaw cycles.

**Precautions**

SALL4 Antibody (Center) is for research use only and not for use in diagnostic or therapeutic procedures.

**SALL4 Antibody (Center) - Protein Information****Name** SALL4**Synonyms** ZNF797**Function** Transcription factor with a key role in the maintenance and self-renewal of embryonic

and hematopoietic stem cells.

**Cellular Location**

Cytoplasm. Nucleus.

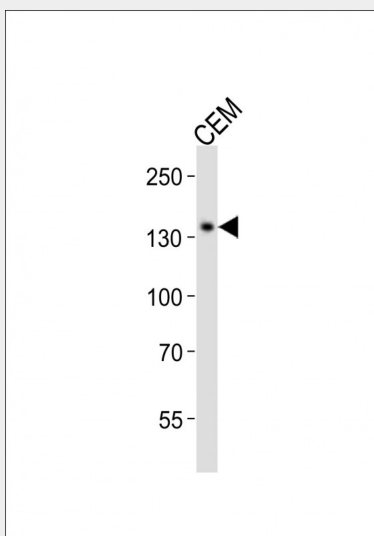
**Tissue Location**

Expressed in testis. Constitutively expressed in acute myeloid leukemia (AML).

**SALL4 Antibody (Center) - Protocols**

Provided below are standard protocols that you may find useful for product applications.

- [Western Blot](#)
- [Blocking Peptides](#)
- [Dot Blot](#)
- [Immunohistochemistry](#)
- [Immunofluorescence](#)
- [Immunoprecipitation](#)
- [Flow Cytometry](#)
- [Cell Culture](#)

**SALL4 Antibody (Center) - Images**

Western blot analysis of lysate from CEM cell line, using SALL4 Antibody (Center)(Cat. #AP21144a). AP21144a was diluted at 1:1000. A goat anti-rabbit IgG H&L(HRP) at 1:10000 dilution was used as the secondary antibody. Lysate at 20ug.

**SALL4 Antibody (Center) - Background**

Transcription factor with a key role in the maintenance and self-renewal of embryonic and hematopoietic stem cells.

**SALL4 Antibody (Center) - References**

Ma Y.,et al.Blood 108:2726-2735(2006).  
Deloukas P.,et al.Nature 414:865-871(2001).  
Mural R.J.,et al.Submitted (SEP-2005) to the EMBL/GenBank/DDBJ databases.

Kohlhase J.,et al.Hum. Mol. Genet. 11:2979-2987(2002).

Dephoure N.,et al.Proc. Natl. Acad. Sci. U.S.A. 105:10762-10767(2008).